

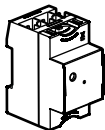
Connected Latching Relay

4 121 70



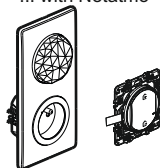
Requires the installation of a :

Gateway module

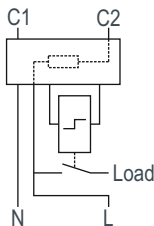
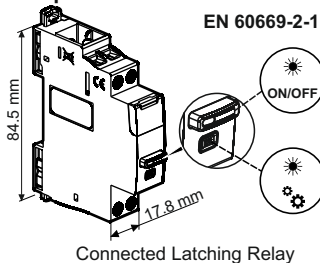


OU

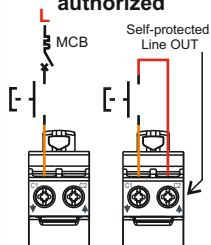
Connected Starter Pack
"... with Netatmo"



Composition



Control wiring authorized



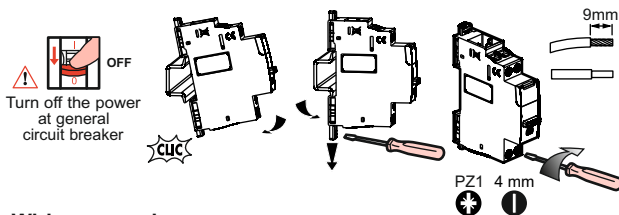
	U	I	F						
-5°C +45°C	100-240V~ 50/60Hz	16A MAX	2.4 à 2,4835Ghz <100 mW	Silent < 10dB	Planning	Measure	3840W	650W	3000W

Imperative security precaution



Failure to strictly comply with the installation and use conditions may result in risk of electric shock or fire.

1 Preparation, connection



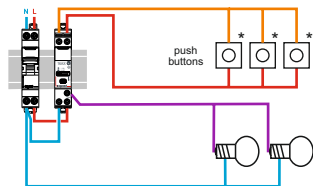
C1, C2: MAX 2x 1.5mm ² 2.5mm ²
N, L, Load: MAX 2x 2.5mm ² 6mm ²
C1,C2, N, L, Load: MIN : 0.8Nm MAX : 1.4Nm

Wiring examples

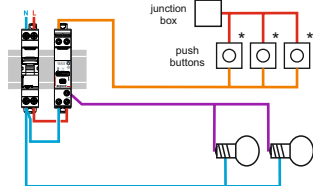
! Do not use a switch (with dimmer option) connected to control a Connected Latching Relay.

A load protection circuit breaker with appropriate rating is required
The control circuit has integrated power and protection.

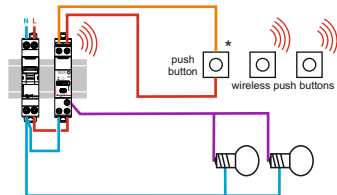
Wired installation



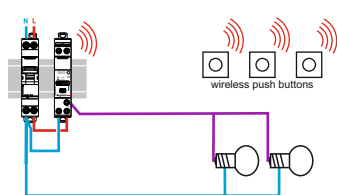
Wired installation with junction box



Mixed wired and wireless installation



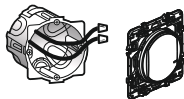
Wireless installation



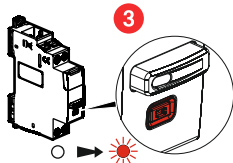
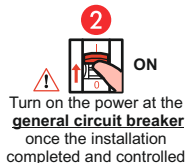
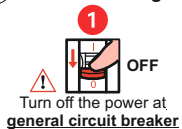
* : Non-functional indicator lights on push-buttons with indicator lights with connected latching relay

- N (neutral) = blue
- L (Line) = everything but blue and green/yellow
- Line after contact = usually purple, orange...

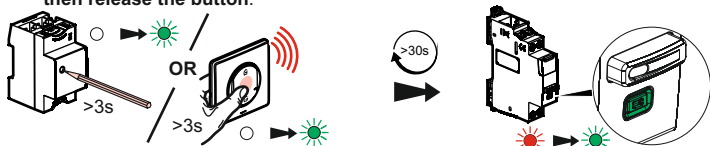
Tips: in case of replacement of an old push button by a wireless control, isolate wires that are no longer used



2 Add the **Latching Relay** in a connected installation



3 Press and hold the Gateway module settings button, or in the center of the General Scenario Wireless Command until the LED turns green, then release the button.



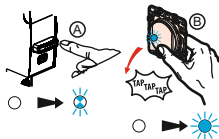
The configuration LEDs of " ... with Netatmo " devices must all light up in fixed green.

Option: associate a wireless on-wall switch " ... with Netatmo " LEDs must be lighting fixed green, see. **3**

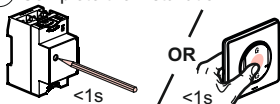
A Press the main button of the Connected Latching Relay until the LED is slowly blinking blue and then release it.

B Hold down the wireless remote button and tap until the LED turns fixed **blue**. Then release the button.

C When the Connected Latching Relay LED turns green, go to step **4**



4 Complete the installation



Briefly press the setting button on the Gateway module (or in the center of the General Scenario Wireless Command) to finalize the installation. All devices LED go OFF.

5 Finalize the installation in the Legrand Home + Control app
To add this connected product and peripheral items in your connected installation, you must follow the instructions:

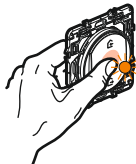
- with Legrand Home + Control app (Parameters/Add new product)

- or consult the guides and instructions sheets on **legrand.fr**

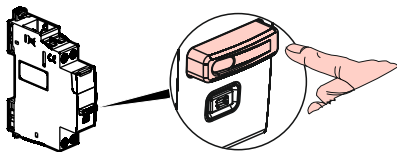


Wireless push button resetting

Press and hold the center of the push button until the LED lights up in orange, then briefly press on the center to confirm the reset.



Use by manual control and status LED



ON/OFF Mode

ON



OFF



www.legrand.fr/reference/412170

LEGRAND - Pro and Consumer Service - BP 30076
87002 LIMOGES CEDEX FRANCE • www.legrand.com

EU SIMPLIFIED DECLARATION OF CONFORMITY

The undersigned,

Legrand

declares that the radio equipment listed on this instruction sheet
are compliant to the directive 2014/53/UE.

The full text of the EU declaration of conformity
is available at the following website:

www.legrandoc.com