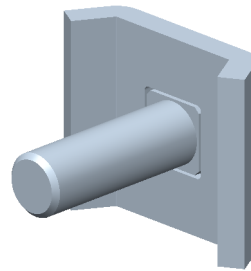
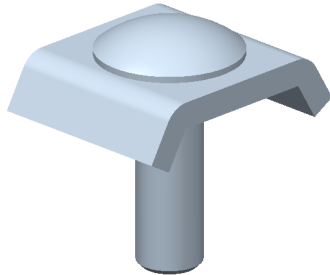


**ECLISSE CE25VS
CE25VS SPLICE**

Reference(s) : 558 021/24/27 - 350571


1. GAMME / RANGE

Designation	Code	Poids / Weight (Kg) (lb)		Epaisseur / Thickness (mm) (inch)		Composant	Matière / Material	Classe / Class	Norme / Standard	Finition / Coating	Classe de résistance contre la corrosion / Class for resistance against corrosion
CE25VS GS	558 021	0,015	0,033	2,5	0,098	CE25 GS	DX51D Z275	-	EN 10 346	GS	Class 3 / IEC 61537
						TRCC 6x20 EZ	-	4.8	ISO 898-1		
CE25VS 316L	558 024	0,014	0,031	2	0,079	CE25 316L	X2 Cr Ni Mo 17-12-2	-	EN 10 088-2	IN3016L / SS316L	Class 9D / IEC 61537
						TRCC 6x20 316L	-	4.8	ISO 898-1		
CE25VS ZnL	558 027	0,015	0,033	2,5	0,098	CE25 ZnL	S235 JR	-	EN 10 025	ZnL	Class 6 / IEC 61537
						TRCC 6x20 ZnL	-	4.8	ISO 898-1		
CE25VS ZnMg	350 571	0,015	0,033	2,5	0,098	CE25 ZnMg	S220 GD ZM	-	EN 10 346	ZnMg	Class 8 / IEC 61537
						TRCC 6x20 ZnMg	-	4.8	ISO 898-1		

2. DIMENSIONS (mm/inch)
