

Mosaic™ Programme

USB sockets for charging

■ For charging while travelling

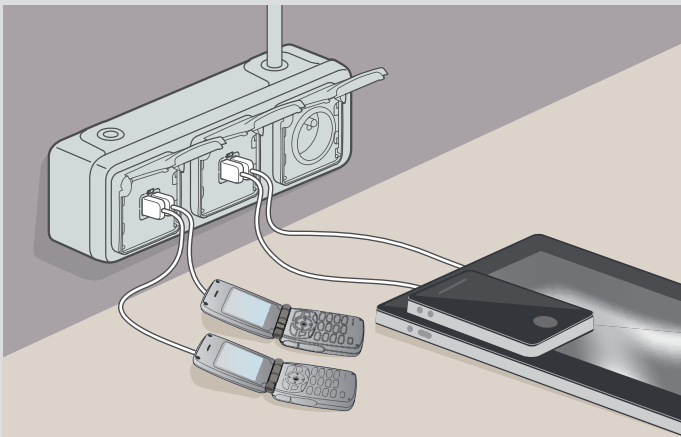
Provides extra energy in passage/transit areas



Waiting area (train station, airport, bar, restaurant...)

■ For charging in harsh environments

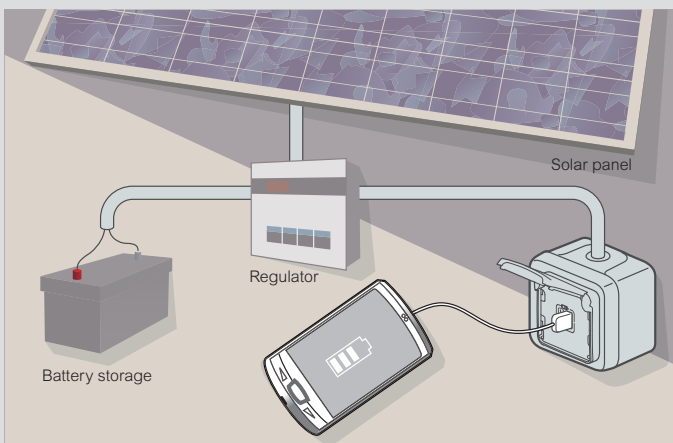
Gives access to a compact charging station



Technical area, workshop, laboratory...

■ For charging in remote places

Gives access to the strict amount of energy necessary for charging



Energy-independent areas

■ For charging in working places

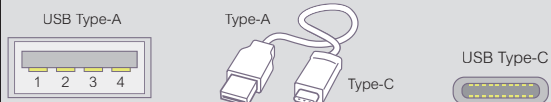
Facilitates access to charge points
Saves the user having to carry his mobile charger along
Allows having more connection points available



Office or meeting rooms

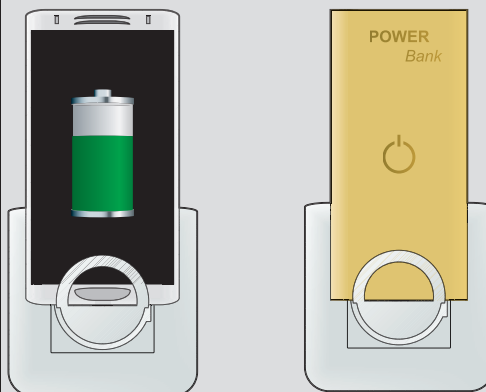
■ Modules de charge USB Type-A et Type-C

USB Type-C : nouvelle version miniaturisée et réversible du connecteur USB traditionnel (Type-A)



■ For quick and cordless charging

The 2400 mA micro USB charging dock exempts the user from handling the cord
It allows a quick charging of all devices: tablets, smartphones, powerbanks...



■ For charging several users have a side USB connector for a second device

