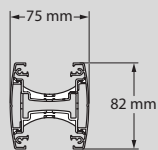


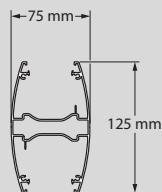
# Snap-on mini-columns and columns

## ■ Dimensions (in mm)

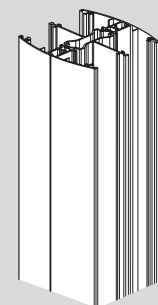
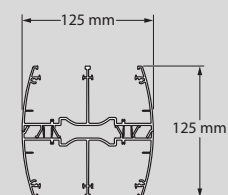
1-compartment columns, mini-columns and movable columns



2-compartment columns, mini-columns and movable columns



4-compartment columns and mini-columns



## ■ Wiring capacity

1-compartment columns

Max. capacity of conductors (for each type of conductor)	1-compartment (with <i>entretoise</i> )		1-compartment (with 1 mechanism)		1-compartment (with 1 mechanism and <i>entretoise</i> )	
	A	B	A	B	A	B
<b>Compartment</b>	A	B	A	B	A	B
<b>Total cross-section (mm<sup>2</sup>)</b>	1440	1440	3220	-	210	1440
<b>Number of cables</b>	Ø7 mm	22	54	-	-	22
	Ø9 mm	12	12	30	-	12
	Ø11 mm	9	9	18	-	9

2-compartment and 4-compartment columns

Max. capacity of conductors (for each type of conductor)	2-compartment (with 1 mechanism)		4-compartment (with 1 mechanism)	
	A	B	A	B
<b>Compartment</b>	A	B	A	B
<b>Total cross-section (mm<sup>2</sup>)</b>	1470	3110	1110	2760
<b>Number of cables</b>	Ø7 mm	20	54	15
	Ø9 mm	12	34	9
	Ø11 mm	9	22	6

Ovaline columns

Max. capacity of conductors (for each type of conductor)	Rigid Ovaline	Flexible Ovaline	Telescopic pole with covers
<b>Compartment</b>	A	A	A
<b>Total cross-section (mm<sup>2</sup>)</b>	1000	485	985
<b>Number of cables</b>	Cat. 6 FTP or coaxial Ø7 mm	18	9
	3 x 1.5 mm Ø9 mm	10	5
	3 x 2.5 mm Ø11 mm	6	3

## ■ Installation principle of the Flexible Ovaline kit on snap-on column

