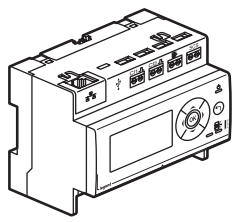
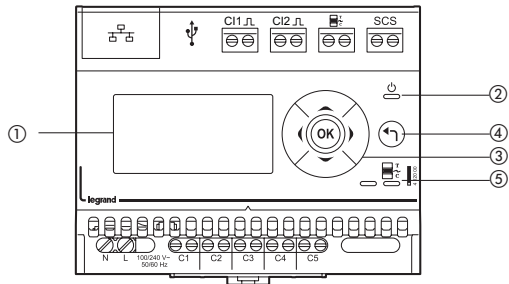


• Présentation

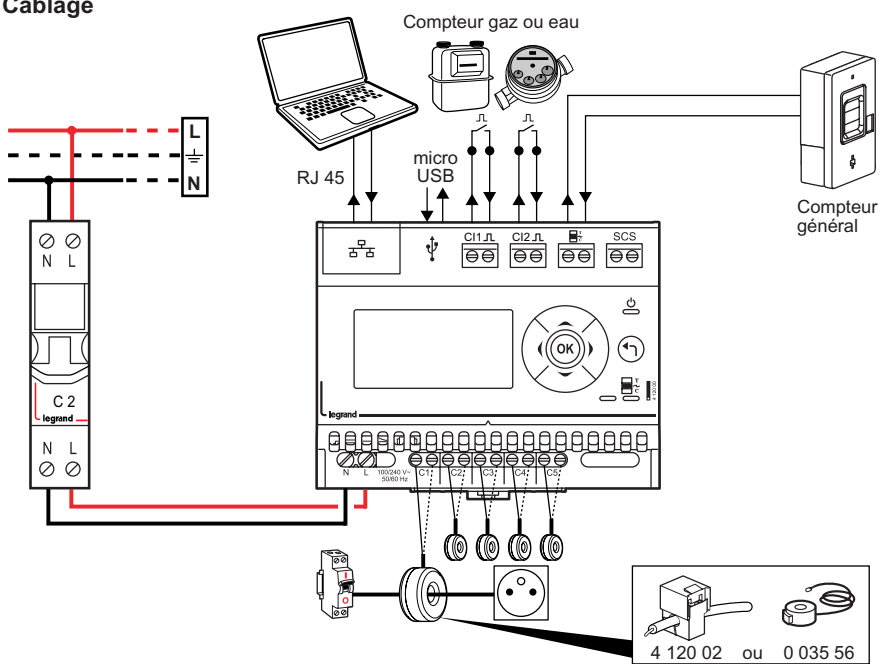


	100 - 240 V
	50 - 60 Hz
	1,5 mm <sup>2</sup>
	RJ 45/IP
	-10°C → + 55°C

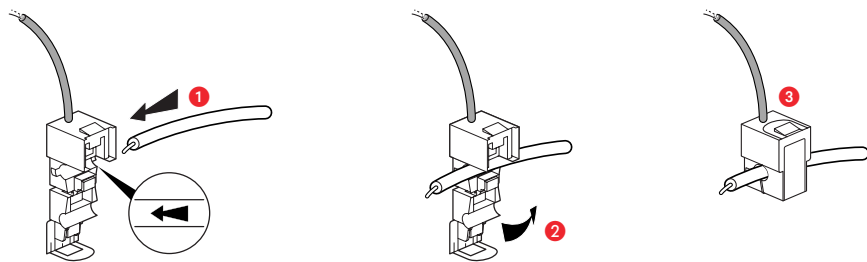


- ① Afficheur
- ② LED Power
- ③ Boutons de navigation
- ④ Bouton "retour"/mise à zéro compteur partiel
- ⑤ LED TIC (spécificité France)

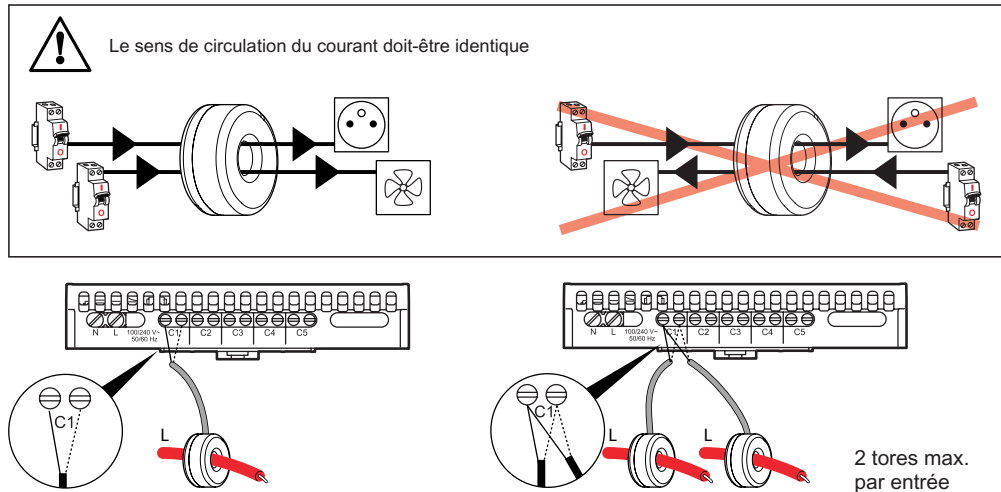
• Câblage



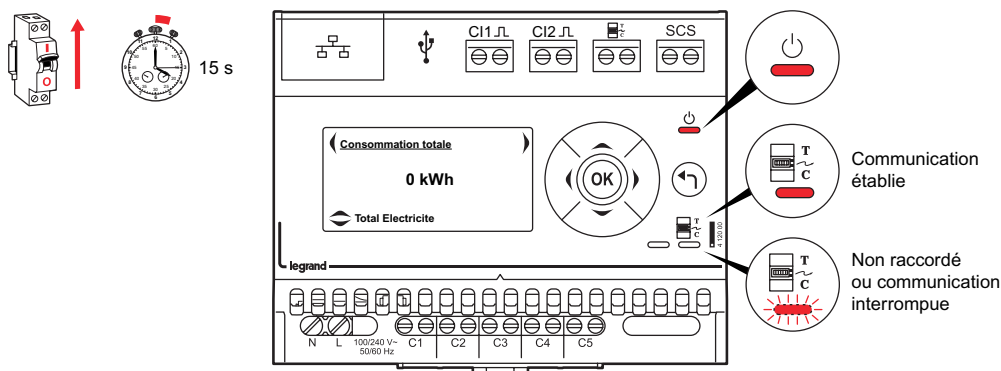
Câblage des tores (transformateurs d'intensité (TI))



- Nombre de fils max. par tore : - 10 x 1,5 mm<sup>2</sup>
- 7 x 2,5 mm<sup>2</sup>
- 4 x 6 mm<sup>2</sup>
- 1 x 10/16/25 mm<sup>2</sup>



• Mise en service



• Paramétrage

Consommation totale: 0 kWh

Choix de la langue: Français

Réglage date et heure: Date 26/07/13, Heure 09:10

Choix de la devise: €

Choix des entrées tores: C1 Chauffage, C2 Refroidissement

Réglages des entrées impulsions: Gaz, Eau

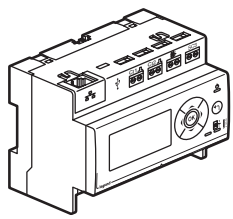
Paramétrage réseau: Adresse IP pour connexion via un navigateur web: [www.legrandoc.com](http://www.legrandoc.com)

Renseigner les tarifs de l'électricité: Tarif de Base 0,1287€

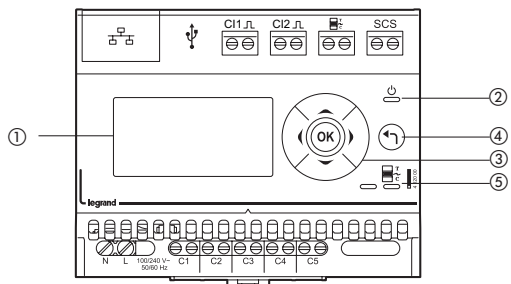
Visualisation des consommations: 0 kWh

Mise à zéro du compteur partiel par usage: 10 kWh

• Presentation

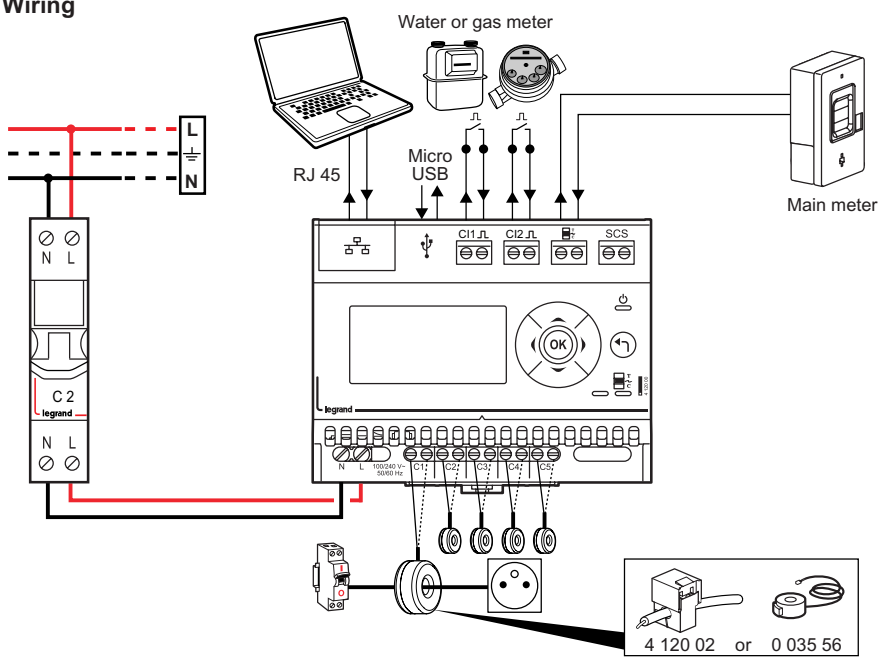


	100 - 240 V
	50 - 60 Hz
	1.5 mm <sup>2</sup>
	RJ 45/IP
	-10°C → + 55°C

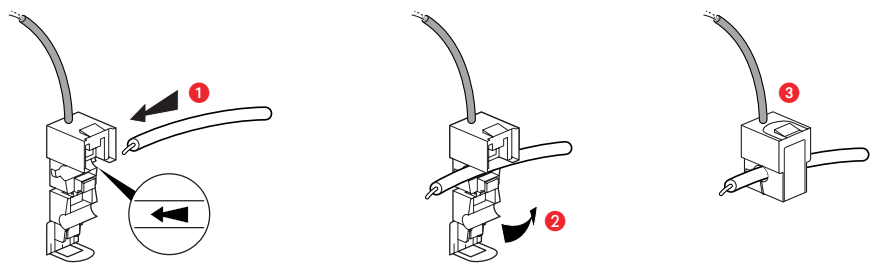


- ① Display
- ② Power LED
- ③ Navigation buttons
- ④ Back/Partial counter reset button
- ⑤ TIC LED (specific to France only)

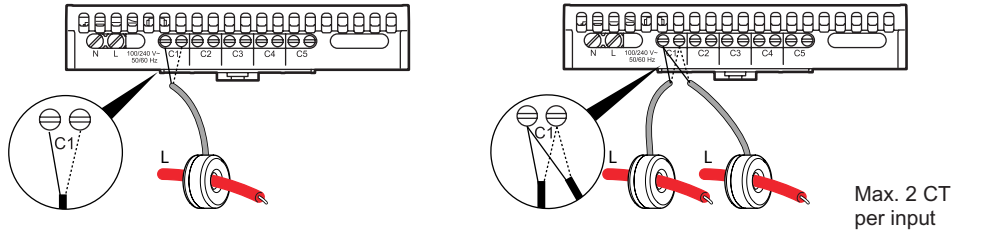
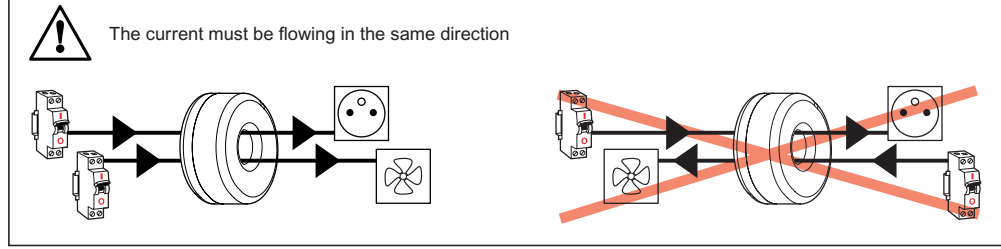
• Wiring



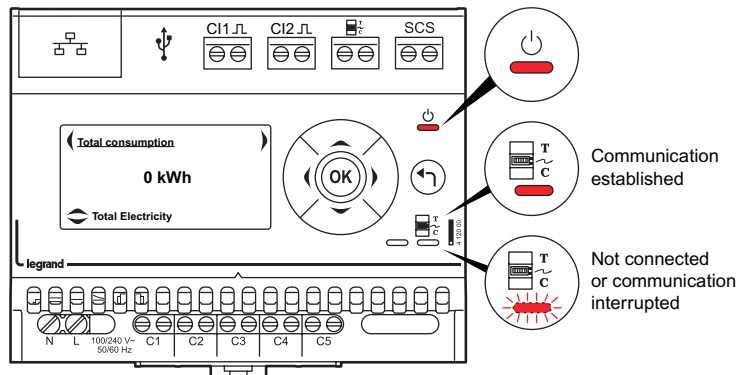
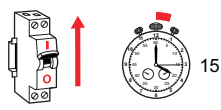
Wiring the current transformers (CT)



- Max. number of wires per CT:
- 10 x 1.5 mm<sup>2</sup>
  - 7 x 2.5 mm<sup>2</sup>
  - 4 x 6 mm<sup>2</sup>
  - 1 x 10/16/25 mm<sup>2</sup>



• Commissioning



• Settings

Consumption totale: 0 kWh

Choice of language: English

Date and time setting: 26/07/13, 09:10

Choice of currency: £

Choice of transformer inputs: Heating, Cooling

Pulse input settings: Gas, Water

Network settings: DHCP Yes, IP ADDRESS = 0.0.0.0

Entering the electricity tariffs: Basic Price 0.1287€

Displaying consumption: 0 kWh

Resetting the partial counter per usage: 10 kWh, Partial counter RESET

Consumption totale: 0 kWh

Total Electricite

OK

Choice of language

Langue: English

Language: English

OK

Date and time setting

Date: 26/07/13

OK

Time: 09:10

OK

Choice of currency

Currency: £

OK

Choice of transformer inputs

C1: Heating

C2: Cooling

Assignment of C3/C4/C5: Heating, Cooling, Hot water, Socket outlets, Custom

Pulse input settings

Gas: Assignment of C1: Gas

Water: Assignment of C2: Water

Price of one kWh: 1.0000

Price of one m<sup>3</sup>: 1.0000

It is possible to customise a pulse input by selecting the Custom option.

Network settings

IP address for Web browser connection: [www.legrandoc.com](http://www.legrandoc.com)

DHCP: Yes

Assigns the IP address automatically

For entering the IP address and subnet mask manually

Entering the electricity tariffs

Electricity prices: Basic Price 0.1287€

The other tariffs listed are specific to France

Displaying consumption: 0 kWh

Resetting the partial counter per usage: 10 kWh, Partial counter RESET

4 seconds