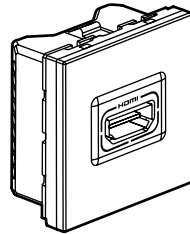
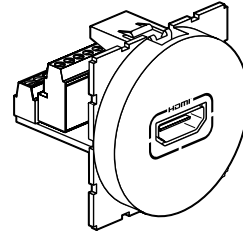


Arteor™ HDMI socket

Cat. No(s).: 572 281/285/781/785



572 281/781



572 285/785

1. USE

The HDMI is an audio-video socket for connecting terminals such as plasma or LCD televisions and home cinema systems. DVD writers, satellite demodulators, etc.

The connection is in high-fidelity digital format. The link between the two items of equipment must not be longer than 20 m to ensure high quality. Beyond that an amplification system must be included in the installation.

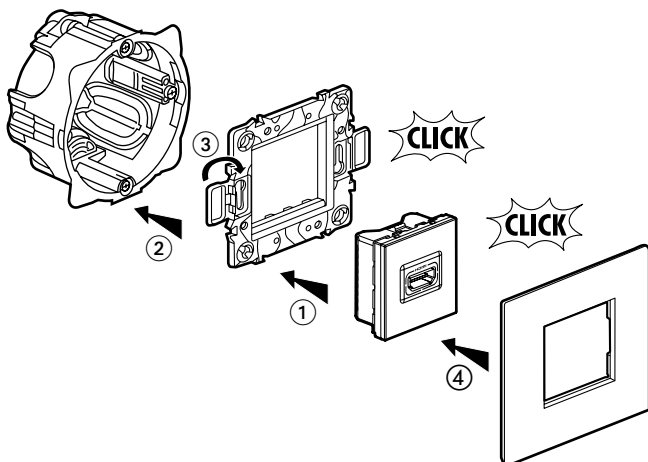
Type A connectors comply with standard HDMI 1.3.

2. RANGE

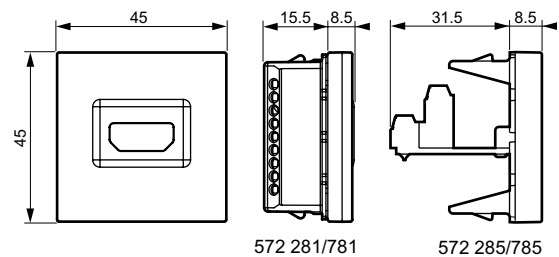
	Designation	Finishes		Number of modules	Connection method	Weight (g)
		White	Magnesium			
	HDMI socket square	572 281	572 781	2	with screws	35
	HDMI socket round	572 285	572 785	2	with screws	33

3. PREPARATION

The mechanisms can be flush-mounted.



4. OVERALL DIMENSIONS



5. CONNECTION

Wide terminal bank compatible with max. 1 mm² conductor.

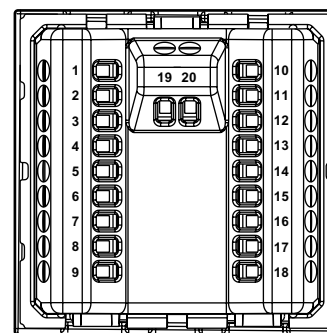
Supplied in a bag containing:

- 1 colring cable tie
- Crimp terminals for < 0.5 mm² conductors
- Thermoformable sheaths.

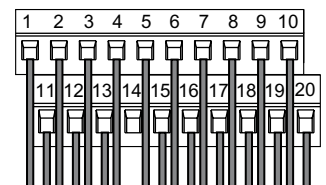
Cable bend radius: 35 mm.

Max. cable length: 20 m (beyond that an HDMI amplifier is recommended).

For 572 281/781



and for 572 285/785



- 1 - TMDS Data 2+
- 2 - TMDS Data 2
- 3 - TMDS Data 2-
- 4 - TMDS Data 1+
- 5 - TMDS Data 1
- 6 - TMDS Data 1-
- 7 - TMDS Data 0+
- 8 - TMDS Data 0
- 9 - TMDS Data 0-
- 10 - TMDS Data+
- 11 - TMDS Clock
- 12 - TMDS Clodk-

- 13 - CEC
- 14 -
- 15 - SCL
- 16 - SDA
- 17 - Ground
- 18 - + 5 v
- 19 - HPD
- 20 - General (grounding) strand

5. CONNECTION *(continued)*

Wiring:

Required tools: flathead screwdriver 0.4 x 2.5 mm and flat-nose pliers. Isolate the braids and the drain wire with the neoprene sleeves supplied, thread them through the crimp terminals supplied and crimp with the flat-nose pliers.

Fold the cable cores in two to improve mechanical resistance, thread them through the crimp terminals supplied and crimp with the flat-nose pliers.

Start by wiring the braids and the drain wire then the coaxial cores.

End with the single conductors.

Hold the cable in place mechanically by using the cable tie supplied.

6. TECHNICAL CHARACTERISTICS

6.1 Mechanical characteristics

Impact tests: IK 04

Penetration of solids/liquids: IP 40

6.2 Materials characteristics

Centre plate: ABS

Self-extinguishing: 650° C / 30 s

6.3 Climatic characteristics

Storage temperature: - 10° C to + 70° C

Operating temperature: - 5° C to + 50° C

7. CLEANING

Surface cleaning with a cloth.

Do not use: acetone, tar remover, trichloroethylene.

Resistance to the following cleaning agents: Hexane (EN 60669-1), Methylated spirits, Soapy water, Diluted ammonia, Diluted pure bleach 10 %, Glass cleaning substance, Pre-impregnated wipes.

Caution: A preliminary test should be carried out if other specific cleaning products are to be used.