

Desktop multi-outlet extensions



6 535 50



6 535 53



6 535 30

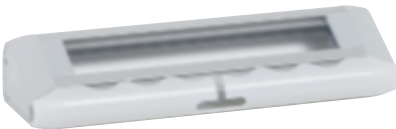
Aluminium extensions with reversible cable guide for grouping cords of connected devices
For low current sockets, connection on RJ 45 sockets or area distribution box with specific cord RJ 45/stripped Cat.Nos 0 517 96/97/98 (see p. 676)
2P+E sockets with 45° sloping screw recesses for easy insertion of angled plug
16 A - 250 V - with shutters
3680 W at 230 V per circuit
Conform to IEC 60-884-1

Pack	Cat.Nos	With high-current sockets
1	6 535 50	Supplied without cord High current connection on terminal blocks with cable grip - 6 x 2P+E sockets - 1 illuminated switch
1	6 535 51	- 2 x 2P+E sockets - 2 x 2P+E tamperproof sockets
1	6 535 52	With high-current and low-current sockets Supplied without cord High current connection on terminal blocks with cable grip - 4 x 2P+E sockets - 3 x RJ 45 sockets Cat. 6 UTP 1 module
1	6 535 53	- 2 x 2P+E sockets - 2 x 2P+E tamperproof sockets - 2 x RJ 45 sockets Cat. 6 UTP - 2 blanking plates 1 module for VDI
1	6 535 30	With high-current sockets, USB phone charger and data connection - 2 x 2P+E sockets - 1 x USB phone charger - 0.9 m RJ 45 Cat. 6 FTP retractable cord
1	6 535 31	- 3 m power cord with 2P+E plug - 2 x 2P+E sockets - 1 x USB phone charger - 2 x RJ 45 sockets Cat. 6 UTP - 3 m power cord with 2P+E plug

Desktop multi-outlet extensions to be equipped



0 535 90



0 535 91



0 535 99



0 535 98

Pack	Cat.Nos	Empty aluminium extensions
1	0 535 90	Aluminium extensions with cable guide (reversible) To be equipped with Mosaic sockets
1	0 535 91	8 modules 12 modules
1	0 535 92	16 modules
5	0 535 99	Accessories Fixing accessory Fixing accessory to clip on desktop
1	0 535 98	Cable worm 2 compartments Length: 0.75 m White colour Very suitable solution for a safe and design protection of the cabling between desk and floor