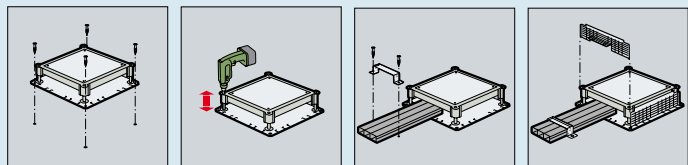
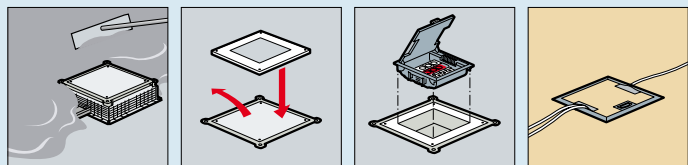


PVC floor duct and backboxes for concrete floor

PVC floor duct and backboxes installation principle

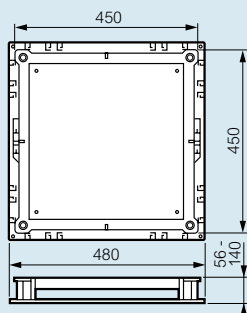


Underfloor box fixing Height adjustment Placing the floor ducts Placing the lateral sides



Pouring the concrete Cover change Placing the floor box

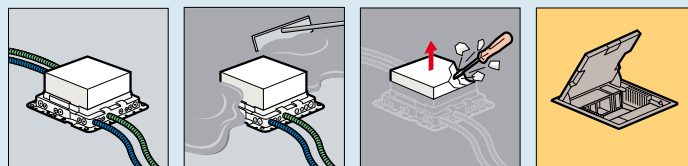
Dimensions



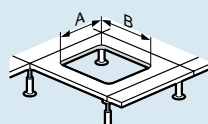
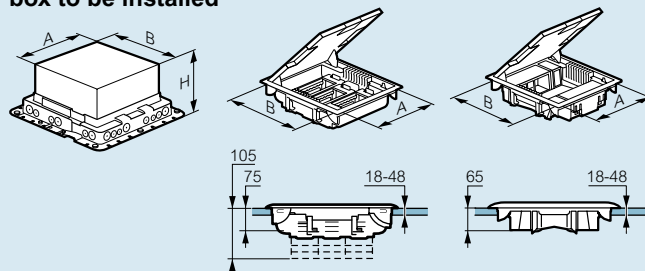
Choice of adaptors for flush-mounting box

Floor boxes	Adaptor plates
Adjustable height: 75 to 105 mm	
10 modules: 0 311 80/81/82 (Easybar)	0 896 36
12 modules: 0 896 05/06/07 0 896 40/41	0 896 36
18 modules: 0 896 10/11/12 0 896 45/46	0 896 37
24 modules: 0 896 15/16/17	0 896 38
Limited height: 65 mm	
10 modules: 0 311 83/84/85 (Easybar) 0 896 20/21	0 896 36
16 modules: 0 896 25/26	0 896 38
For heavy loads	
IP 66: 0 896 85/86	0 896 83 or 0 896 84
IP 30: 0 896 88	

PVC floor boxes and underfloor boxes installation principle



Choice of plastic underfloor box according to the floor box to be installed



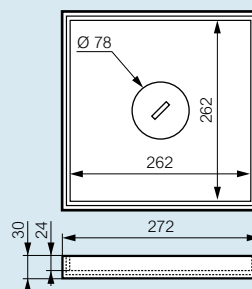
Cat.Nos	A (mm)	B (mm)
0 896 05/06/07/20/21/22	212	252
0 896 10/11/12	252	252
0 896 15/16/17/25/26/27	306	252

Floor boxes	Plastic flush-mounting box
Adjustable height: 75 to 105 mm	
10 modules: 0 311 80/81/82 (Easybar)	0 896 30
12 modules: 0 896 05/06/07 0 896 40/41	0 896 30
18 modules: 0 896 10/11/12 0 896 45/46	0 896 31
24 modules: 0 896 15/16/17	0 896 32
Limited height: 65 mm	
10 modules: 0 311 83/84/85 (Easybar) 0 896 20/21	0 896 30
16 modules: 0 896 25/26	0 896 32

Floor boxes for heavy loads

Size

Cat.No 0 896 86



Cat.No 0 896 85

