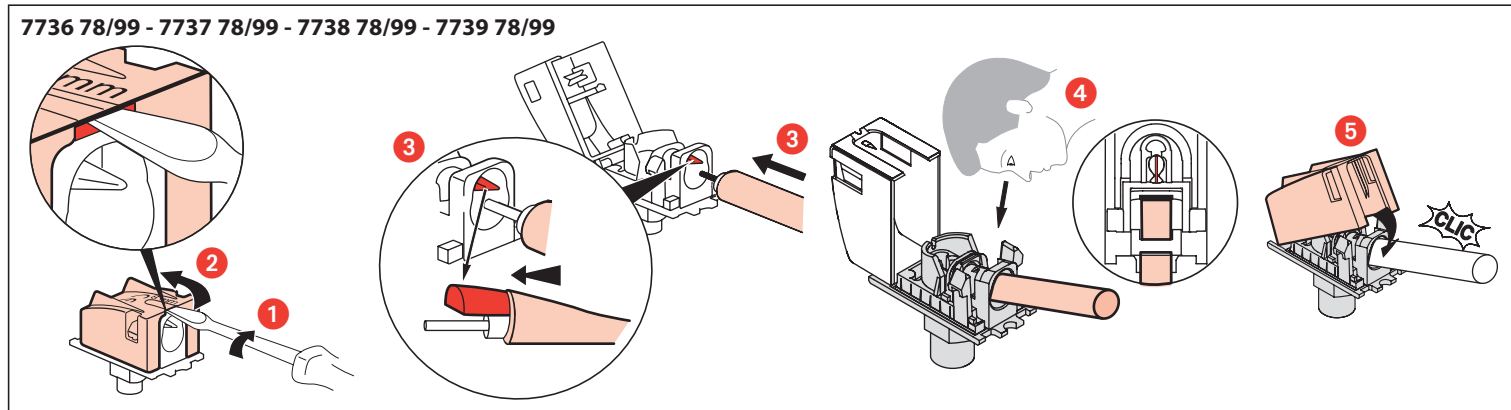
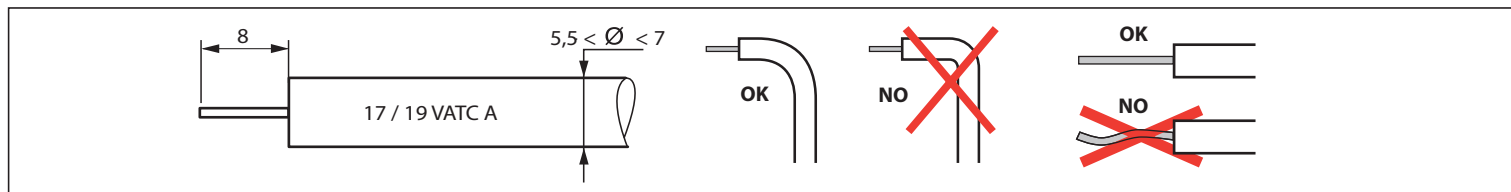



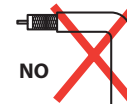
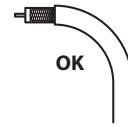
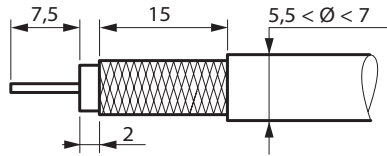


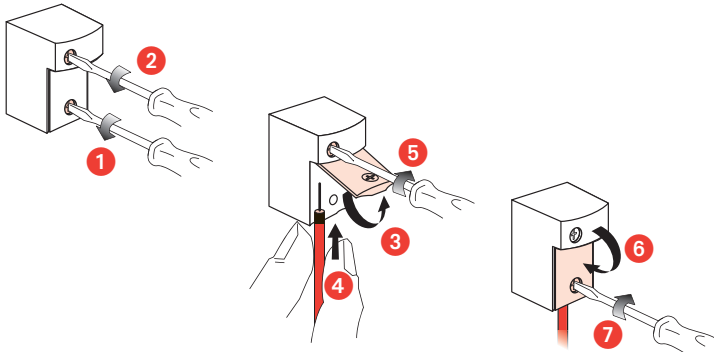
 773X 78	Coax	Attenuation	 500 mA	Control	Return path	Channel 1	Channel FM	Channel VHF	Channel UHF	Channel SAT
	Z = 75 Ω									
			—	22 / 0,6	4 - 30	47 - 68	87,5 - 108	120 - 470	470 - 862	950 - 2400
		dB	mA	KHz / V	MHz	MHz	MHz	MHz	MHz	MHz
 773X 99	 TV 	i < 1,5 dB								



	Coax	Attenuation	Channel 1	Channel FM	Channel VHF	Channel UHF
	Z = 75 Ω					
			4 - 68	87,5 - 108	120 - 470	470 - 862
		dB	MHz	MHz	MHz	MHz
773X 79	TV	 < dB i = 10 dB				
773X 80		 < dB i = 14 dB				



7736 79 - 7737 79 - 7738 79 - 7739 79



7736 80 - 7737 80 - 7738 80 - 7739 80

