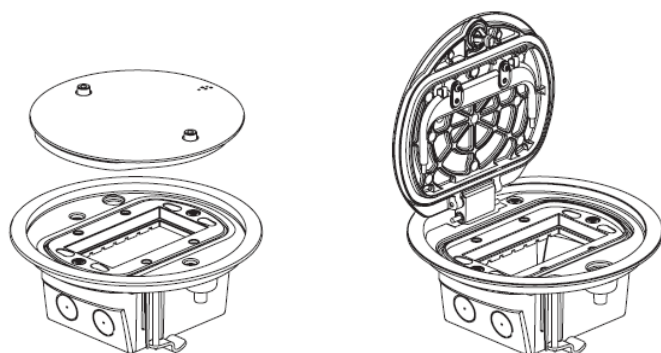


IP66 Floor boxes 4 modules

Cat. Nos : 0 880 60/61/62/63/64/69



CONTENTS	PAGES
1. Range	1
2. Installation	1 to 3
3. Technical characteristics	4 to 5

1. RANGE

Small waterproof floor box to be installed indoor and outdoor :

- IP 66 (closed)
- IP 55 (with cable exit accessory)

2 versions :

- with removable lid
- with hinged lid

2 finishing :

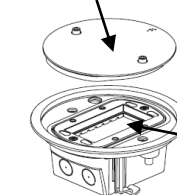
- brass
- stainless

Support frame for Mosaic program or Arteor mechanisms

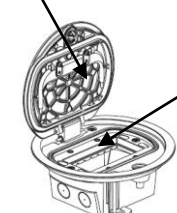
Cat. Nos	Description	Packaging
0 880 69	Back box	1
0 880 62	Cable exit	1
0 880 60	Box with removable lid, brass finish	1
0 880 61	Box with removable lid, stainless steel finish	1
0 880 63	Box with hinged lid, brass finish	1
0 880 64	Box with hinged lid, stainless steel finish	1

Small floor box delivered with :

- removable lid



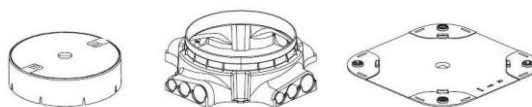
- or
- hinged lid



4 module frame

1. RANGE (cont.)

Backbox

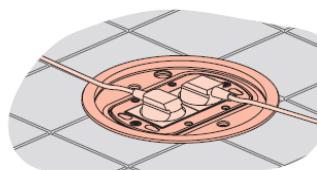


Cable exit accessory

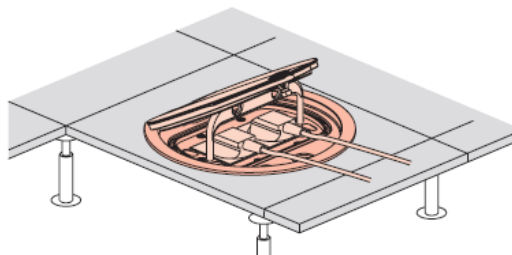


2. INSTALLATION : 2 ways

In screed



In raised



2. INSTALLATION

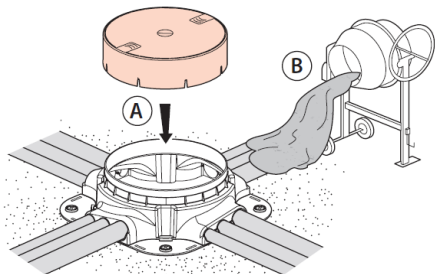
2.1 In screed (with backbox nr 0 880 69)

- min concrete thickness = 65 mm

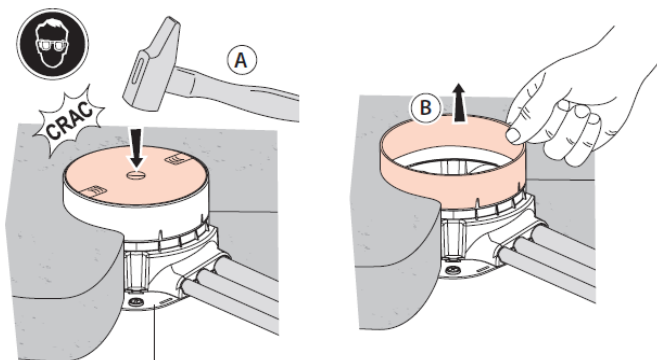
The back box can be use in concrete with pipes diameter 16,20 and 25 mm.

The backbox is provided with a protection cover

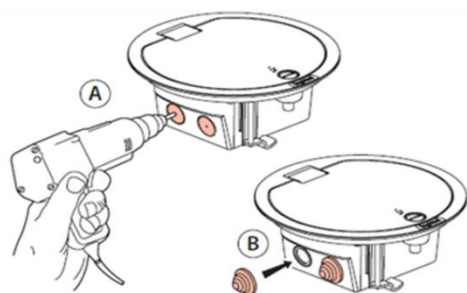
(1) Is it mandatory to close the backbox with the protection (A) when the concrete is poured (B) to avoid concrete to enter in the backbox



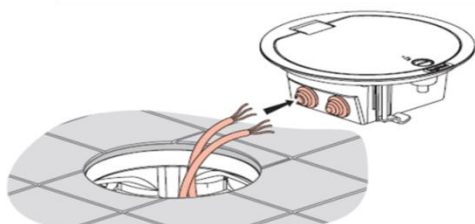
(2) Before installation of the back box, broke the protection cover (A) , and remove the last plastic parts (B)



(3) Drill the back of the floor box at 20mm (A) and add the cable protection (B)



4) Place the cable in the cable protection



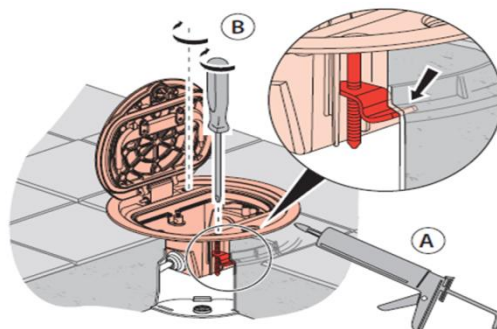
2. INSTALLATION (cont.)

2.1 In screed

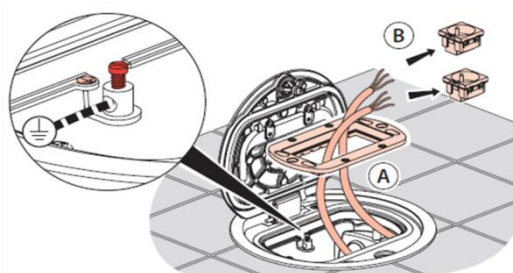
(5) Place the floorbox in the backbox.

Had a silicon seal between the box and the floor

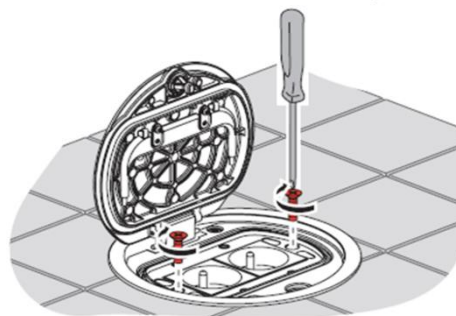
Screw the claws (B)



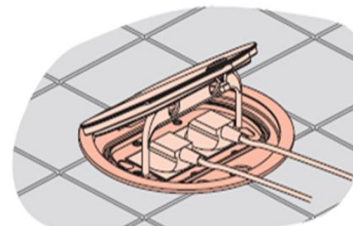
(6) Connect the mechanism with the cable. Don't forget the earth link.



(7) Screw the support frame to the box



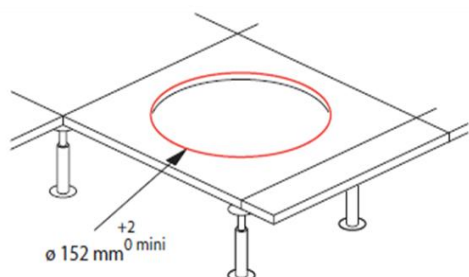
8) Right socket are not compatible with hinged lid



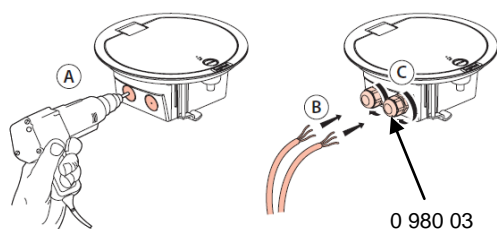
2. INSTALLATION (cont.)

2.2 In raised

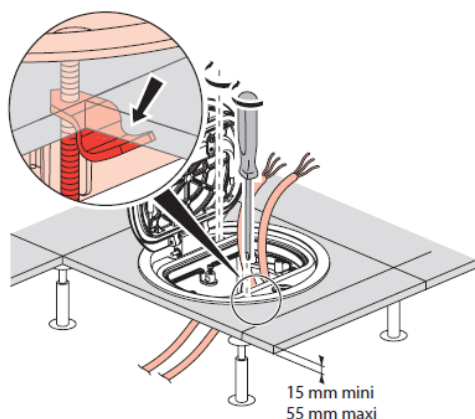
(1) Cut the raised floor at the following dimension :



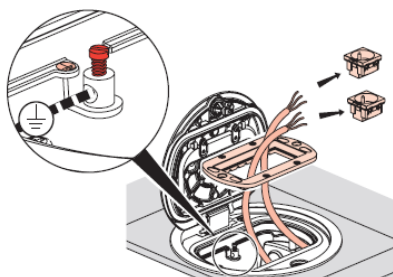
(2) Drill the back of the box at the right diameter according the cable gland. The cable gland had to be well adapted to the cable. Introduce the cables in the cable gland.



(3) Install the box in the raised floor.
Screw the claws



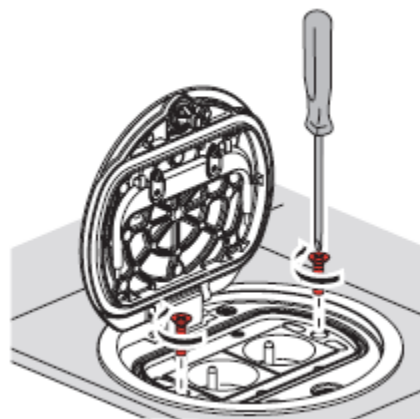
(4) Connect the mechanism with the cable.
Don't forget the earth link



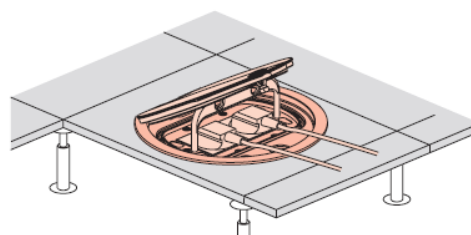
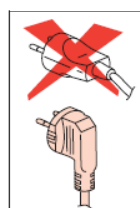
2. INSTALLATION (cont.)

2.2 In raised

(5) Screw the support frame to the box

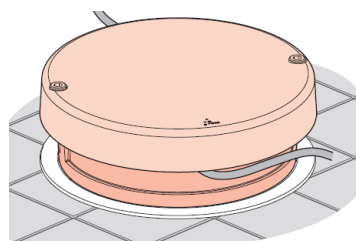


(6) Right socket are not compatible with hinged lid



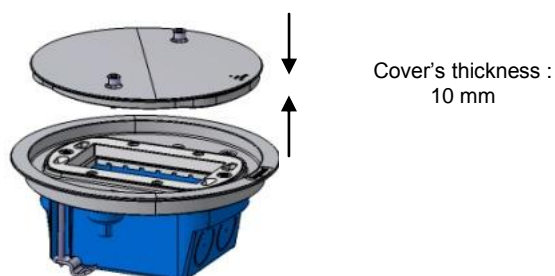
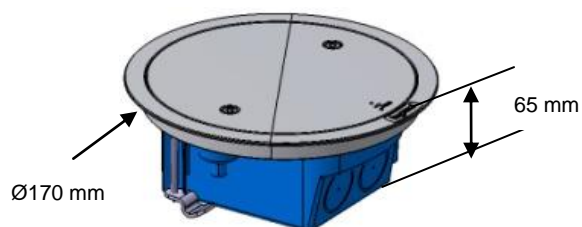
2.3 In raised and in screed

IP 55 with plug connected using cable outlet accessory
cat. No 0 880 62 only on small floor boxes cat. Nos 0 880 60 or
0 880 61

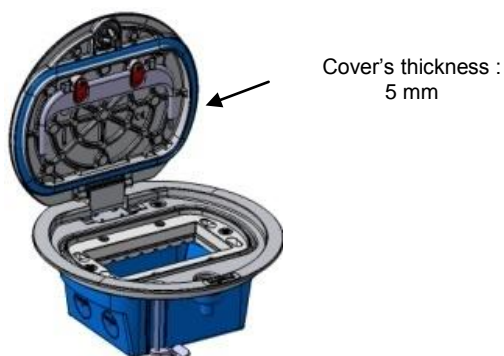
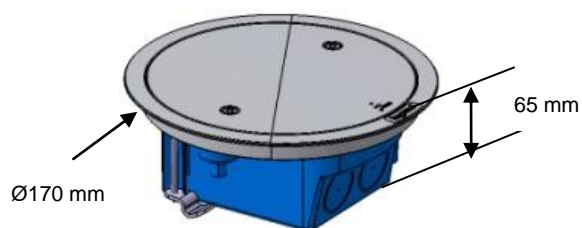


3. TECHNICAL CHARACTERISTICS

Dimensions of the small floor box Cat. Nos 0 880 60/61

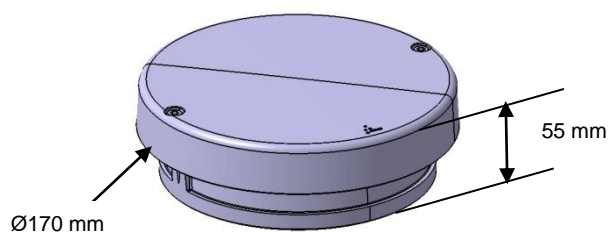


Dimensions of the small floor box Cat. Nos 0 880 63/64

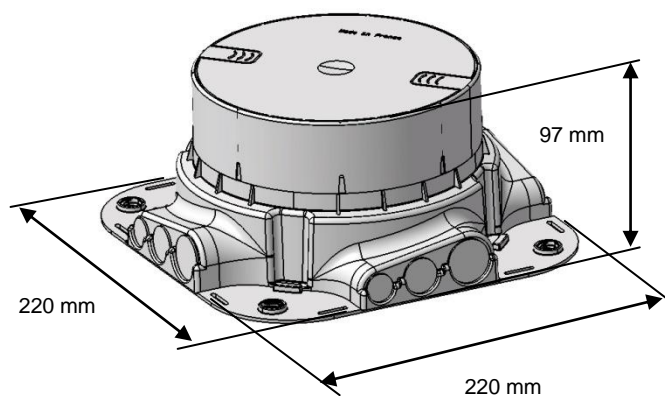


3. TECHNICAL CHARACTERISTICS (cont.)

Dimensions of IP55 accessory Cat. No 0 880 62



Dimensions of backbox Cat. No 0 880 69



3. TECHNICAL CHARACTERISTICS (cont.)

3.1 Classification of the IP66 Floor boxes 4 modules according to the IEC 60670-1 et IEC 60670-23 standard :

7.1 The nature of their material	Composite
7.2 The method of installation	Flush, semi-flush or embedded in non-combustible floors
	Placement suitable for installation into concrete during the casting process
	Floor boxes or enclosures installed in floor subjected to wet treatment
7.3 The type of inlets (outlets)	Without inlets. Inlet openings will be made during installation
7.4 The clamping means	Without clamping means
7.5 The minimum and maximum temperatures during installation	-5°C to +60°C
7.6 The maximum temperature during the casting process	+60°C
15.101 Resistance to vertical load through a small surface	500 N

3.2 Protection class :

Protection to **IP 66** with the cover closed

Protection to **IP 40** with the cover opened

Resistance to impacts **IK 09** with the cover closed

Resistance to loads with the cover closed : **10000 N**

with the hinged cover opening : **1700 N** (Protection of the inserted plugs from traffic load)

Self-extinguishing : + 650° C / 30 s for parts made of insulating materials

The inlets of conduits or cables are marking for a easier installation

3.3 Safety :

Check that the system is earthed

3.4 Cleaning :

Do not use abrasive products or detergents

4. MATERIAL CHARACTERISTICS

The IP66 Floor boxes are :

* Surface treatment : Stainless steel finish or Bronze finish

* Material Zamak

* Plastic materials : ABS et PP

The backbox is :

* Plastic materials : ABS et PP