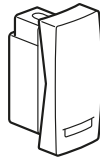
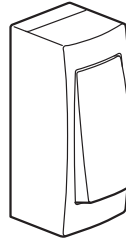


## Surface mounting two-way switch narrow version

Cat. No(s): 0 860 84/87 - 0 861 84/87



0 861 87



0 860 84

### 1. USE

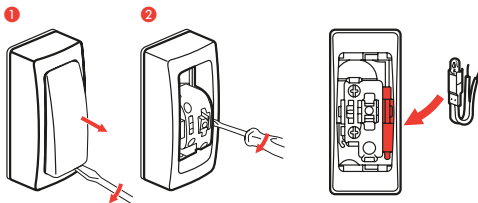
Lighting control mechanism with or without marking components (locator light).

### 2. RANGE

Description	Complete	Configurable
Two-way switch	0 860 84	0 861 84
Two-way switch with indicator light	0 860 87	0 861 87

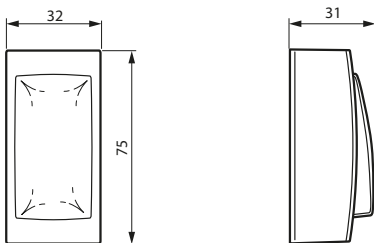
#### Indicator light product:

Light function possible using lamp Cat. No. 0 899 01/02/07.

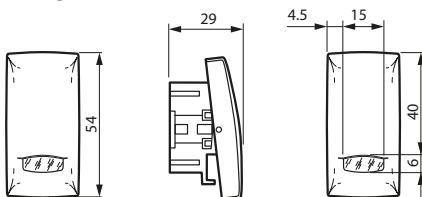


### 3. DIMENSIONS (mm)

#### Complete



#### Configurable



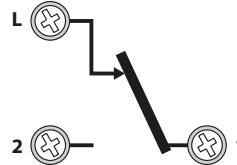
### 4. CONNECTION

#### ■ 4.1 Connection

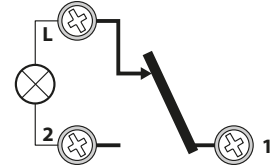
Type of terminals: with screws  
 Terminals capacity: 2 x 2.5 mm<sup>2</sup>  
 Option of two wires per terminal for tapping  
 Stripping length: 7 mm  
 Screwdriver: Posidrive 1, Philips 1, flat 4 mm.

#### ■ 4.2 Wiring diagrams

##### 0 860 84 - 0 861 84



##### 0 860 87 - 0 861 87



### 5. TECHNICAL CHARACTERISTICS

#### ■ 5.1 Mechanical characteristics

Protection against solid bodies and liquids: IP 31D (complete product)  
 Protection against impact: IK 04

#### ■ 5.2 Material characteristics

Plate, frame, coverplate: ABS  
 Colour: White RAL 9003  
 UV resistant

#### Self-extinguishing:

- + 850° C / 30 s for insulating parts holding live parts in place.
- + 650° C / 30 s for other parts made of insulating materials.

#### ■ 5.3 Electrical characteristics

Voltage: 250 V~  
 Current: 10 AX  
 Frequency: 50 Hz

#### ■ 5.4 Climatic characteristics

Use and storage temperature: - 5° C to + 40° C

## 6. CLEANING

Surface cleaning with a cloth.

Do not use: acetone, tar remover, trichlorethylene.

Maintenance with the following products: Hexane (EN 60669-1), Methylated spirit, Soapy water, Diluted ammonia, Bleach diluted to 10%, Window-cleaning products.

**Caution:** A preliminary test should be carried out if other specific cleaning products are to be used.

## 7. ACCESSORIES

### Lamps



0 899 01	12 V	White incandescent - Power consumption 0.4 W
0 899 02	24 V	White incandescent - Power consumption 0.8 W
0 899 07	230 V	Low power consumption green fluorescent

## 8. STANDARDS AND APPROVALS

Compliance with standards of installation and manufacturing.

Refer to e. catalogue.