

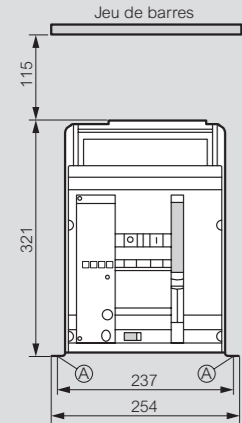
DMX³ 1600 et DMX³-I 1600

dimensions

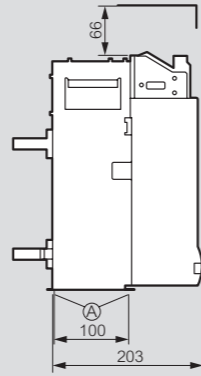
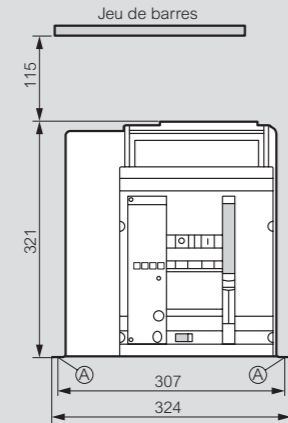
Version fixe - taille 0

Cotes d'encombrement

3P



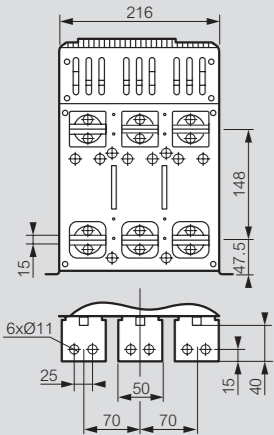
4P



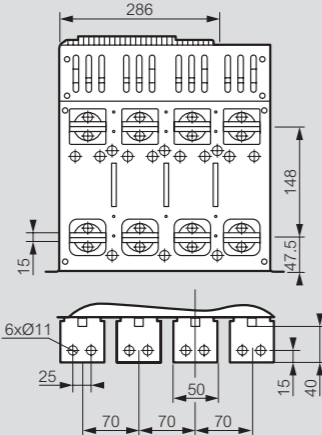
A = point de fixation sur la platine de montage

Prises arrière pour raccordement horizontal avec barres

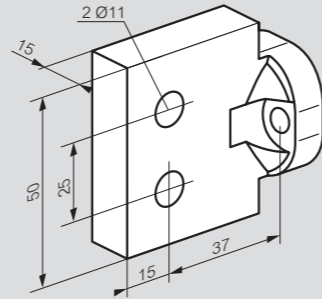
3P



4P

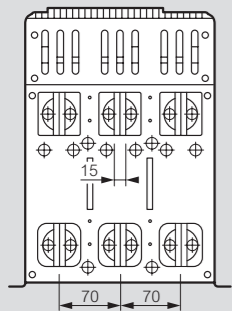


Prises arrière réversibles

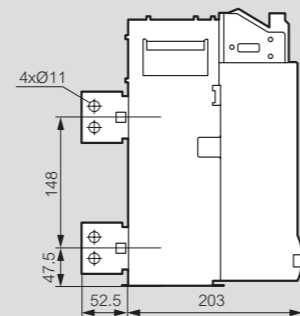
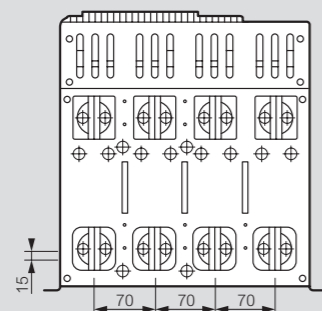


Prises arrière pour raccordement vertical avec barres

3P



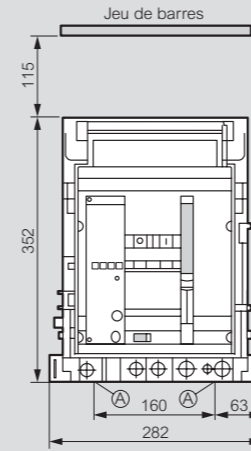
4P



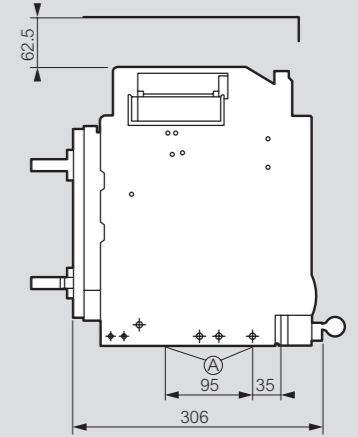
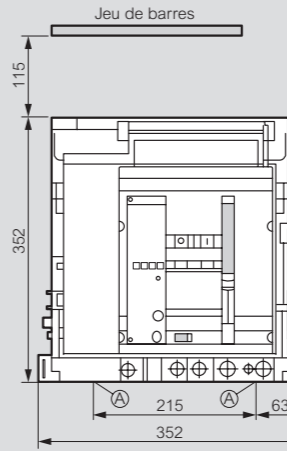
Version débrochable - taille 0

Cotes d'encombrement

3P



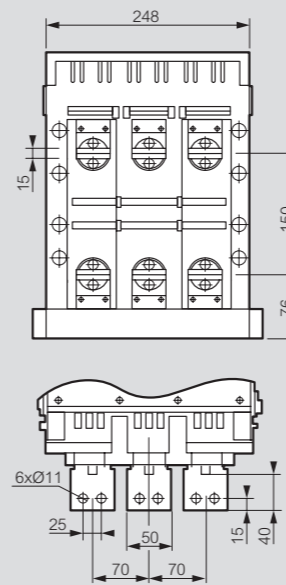
4P



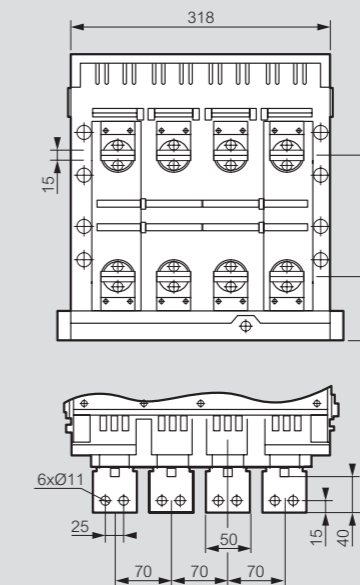
A = point de fixation sur la platine de montage

Prises arrière pour raccordement horizontal avec barres

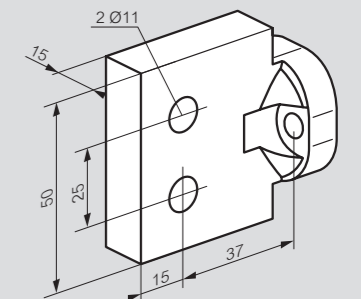
3P



4P

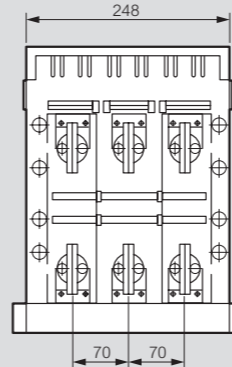


Prises arrière réversibles



Prises arrière pour raccordement vertical avec barres

3P



4P

