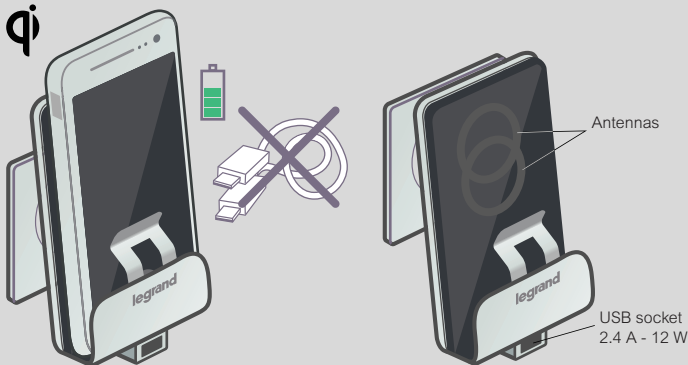


Valena™ IN'MATIC mechanisms

USB charging sockets

■ Induction power station with Type-A USB port

Wireless charging via energy transfer

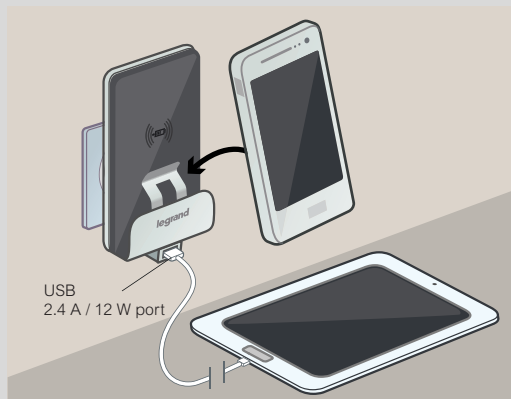


■ Technology and life style

Qi-WPC* certified products
 Wireless Power Consortium: 270 members, ensuring interoperability with Qi phones
 Low-emission technology compatible with ICNIRP specifications for the protection of individuals from electromagnetic fields
 Qi: global standard adopted by vehicle manufacturers and cafés/hotels/restaurants. Equips 100% of induction smartphones
 Averages charge time < 2h30

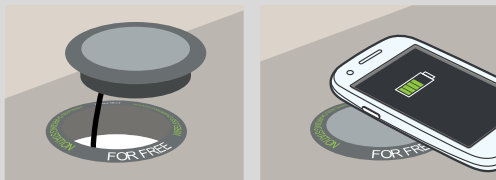
■ Charging in Valena environment

With induction technology and USB 2.4 A Type-A



■ Ergonomically designed to suit different environments

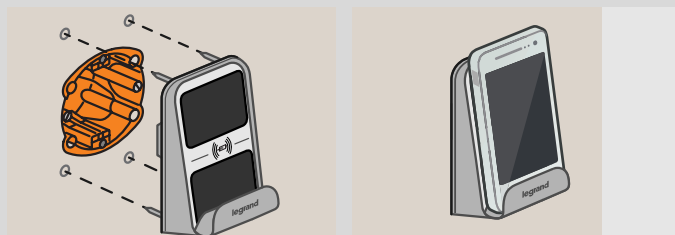
Horizontal charging on furniture



Insertion in an 80 mm diameter cut-out / Fixed to the furniture with a butterfly nut. External power supply with 2.5 m cord

Vertical charging on a wall in public areas (semi-flush-mounted)

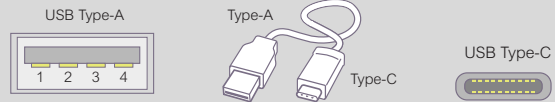
Ideal for in door or awkward outdoor location



Excellent resistance to impacts (IK 08) and adverse weather conditions (IP 66). Fixes directly on the flush-mounting box, can be plugged in for extra fixing strength

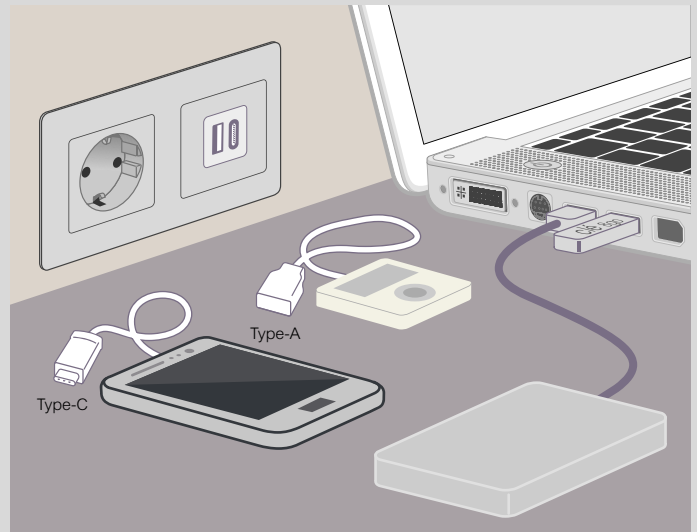
■ Charging USB Type-A and Type-C sockets

USB Type-C : new miniaturized and reversible version of the traditional USB port (Type-A)



■ Installation examples

Cat.No 7 531 06



Installed near a PC, the charging socket releases the USB ports of my terminal and avoids its start-up
 The Type-A and C sockets allow to connect the different terminals of the family

Cat. No 7 531 10

Ideal for extending an installation
 To be installed in place of a screw-mounting 2P+E socket without adding a flush-mounting box

