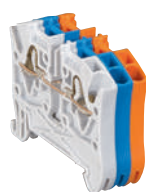


Viking™ 3 terminal blocks with spring connection

for copper cables



0 372 60 + 0 372 00 + 0 372 20



0 372 01



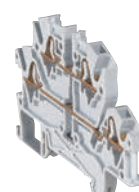
0 372 21



0 372 63



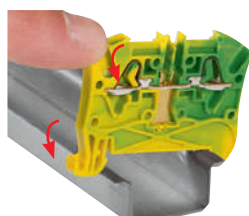
0 372 40



0 372 67



Automatic insertion of flexible wire with ferrule cap or rigid wire up to pitch of 6 mm



0 372 70
Automatic fixing on rail



0 372 72



0 372 79

Technical characteristics p. 336 dimensions see e-catalogue
Approvals p. 919

Screwless connection system, stainless steel spring type
Used to make the electrical connection between 2 rigid copper wires, or flexible copper wires with or without ferrules (p. 306)
Direct tool-free insertion of a rigid wire or flexible wire with ferrule, up to 6 mm pitch
2 areas for automatic insertion bridging combs (upper level only for 2-level blocks)
For rails depth 15 mm, EN 60715 depth 7.5 mm and 15 mm

Pack	Cat.Nos	Connecting						
		Grey for standard circuit, blue for neutral conductor, orange for circuit not broken by the master isolating device						
		1 connection - 2 wires - 1 entry/1 outlet						
		Colour	Nominal cross-section (mm ²)	Rigid wire (mm ²)	Capacity Flexible wire (mm ²)	Capacity Flexible wire with ferrule (mm ²)	Pitch (mm)	
60	0 372 60	Grey	4	0.5 to 6	0.5 to 4	0.5 to 2.5	5	
60	0 372 00	Blue						
60	0 372 20	Orange						
50	0 372 61 ¹	Grey	4	0.5 to 6	0.5 to 4	0.5 to 4	6	
50	0 372 01 ¹	Blue						
50	0 372 21 ¹	Orange						
50	0 372 62 ¹	Grey	6	0.5 to 6	0.5 to 6	0.5 to 6	8	
50	0 372 02 ¹	Blue						
40	0 372 63 ¹	Grey	10	0.75 to 10	0.75 to 10	0.75 to 10	10	
40	0 372 03 ¹	Blue						
10	0 372 64 ¹	Grey	16	4 to 16	4 to 16	4 to 16	12	
10	0 372 04 ¹	Blue						
		1 connection - 3 wires - 1 entry/2 outlets						
60	0 372 40	Grey	4	0.5 to 6	0.5 to 4	0.5 to 2.5	5	
60	0 372 41	Blue						
60	0 372 42	Orange						
50	0 372 43 ¹	Grey	4	0.5 to 6	0.5 to 4	0.5 to 4	6	
50	0 372 44 ¹	Blue						
		1 connection - 4 wires - 2 entries/2 outlets						
60	0 372 46	Grey	4	0.5 to 6	0.5 to 4	0.5 to 2.5	5	
60	0 372 47	Blue						
50	0 372 69 ¹	Grey	4	0.5 to 6	0.5 to 4	0.5 to 4	6	
50	0 372 09 ¹	Blue						
		2 connections - 4 wires - 2 levels						
60	0 372 67	Grey	4	0.5 to 6	0.5 to 4	0.5 to 2.5	5	
60	0 372 07	Blue						
50	0 372 68 ¹	Grey	4	0.5 to 6	0.5 to 4	0.5 to 4	6	
50	0 372 08 ¹	Blue						

Pack	Cat.Nos	For protection conductor						
		Metal base Screwless fixing on rail PEN from 10 mm ²						
		1 connection - 2 wires - 1 entry/1 outlet						
		Colour	Nominal cross-section (mm ²)	Rigid wire (mm ²)	Capacity Flexible wire (mm ²)	Capacity Flexible wire with ferrule (mm ²)	Pitch (mm)	
60	0 372 70	Green/yellow	4	0.5 to 6	0.5 to 4	0.5 to 2.5	5	
50	0 372 71 ¹	Green/yellow						
25	0 372 72 ¹	Green/yellow	6	0.5 to 6	0.5 to 6	0.5 to 6	8	
20	0 372 73 ¹	Green/yellow						
15	0 372 74 ¹	Green/yellow	10	0.75 to 10	0.75 to 10	0.75 to 10	10	
		Green/yellow						
			16	4 to 16	4 to 16	4 to 16	12	
		1 connection - 3 wires - 1 entry/2 outlets						
40	0 372 10	Green/yellow	4	0.5 to 6	0.5 to 4	0.5 to 2.5	5	
30	0 372 11 ¹	Green/yellow						
		1 connection - 4 wires - 2 entries/2 outlets						
40	0 372 12	Green/yellow	4	0.5 to 6	0.5 to 4	0.5 to 2.5	5	
30	0 372 79 ¹	Green/yellow						

1: Built-in end cap

Starfix ferrules and crimping tools
p. 340

CAB 3 marking system
p. 342