

# Atlantic stainless steel cabinets

304 L



# Atlantic stainless steel cabinets

technical characteristics



Wall mounting lugs, horizontal or vertical installation



0 352 01 + 0 364 06



0 352 21

Cabinet and equipment selection chart **p. 288**

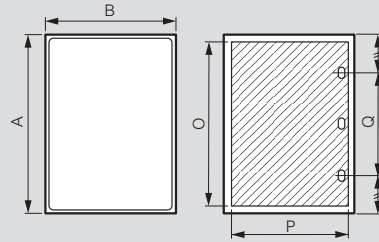
Suitable for harsh environments. Brushed stainless steel finish  
 Door with rounded vertical edges.  
 Double bar lock. Upper and lower protective hoods.  
 Reversible cabinet. Self-centering positioning system for the equipment  
 Optional depth adjustment starting from 600 x 400 x 250 mm cabinets, with slide rails Cat.Nos 0 367 43/44/45 (p. 292)  
 Excellent resistance to corrosion and weather conditions  
 Compatible with all Atlantic & Atantic stainless steel accessories

Pack	Cat.Nos		Stainless steel cabinets 304L			
			IP 66 according to standards IEC/EN 60529 (IP 55 for 2-door cabinets). IK 10 according to standards IEC/EN 62262 (EN 50102) Approvals: cULus: type 4x (type 12 for 2-door cabinets) Bureau Véritas, LCIE N° 80257-575296			
			<b>Vertical version - 1 door</b>			
			External dimensions			
			Height (mm)	Width (mm)	Depth (mm)	Weight (kg)
	Metal door	Glass door				
1	0 352 00		300	200	160	4
1	0 352 01	0 352 21	400	300	200	5.8
1	0 352 02	0 352 22	500	400	200	8.3
1	0 352 03	0 352 24	600	400	200	10.8
1	0 352 55	0 352 75	500	500	250	11
1	0 352 05	0 352 25	600	400	250	12
1	0 352 06	0 352 26	700	500	250	15
1	0 352 11	0 352 31	800	600	300	22
1	0 352 13	0 352 33	1000	800	300	38
1	0 352 14	0 352 76	1200	800	300	45
1	0 352 15		1400	800	400	66
			<b>Square version</b>			
1	0 352 07		400	400	200	7
1	0 352 09		600	600	250	15.5
1	0 352 12		800	800	300	28
			<b>Horizontal version</b>			
1	0 352 04		300	400	200	6
1	0 352 08		400	600	250	12

Pack	Cat.Nos	Stainless steel wall mounting lugs
1	0 364 06	For load up to 300 kg Horizontal or vertical installation Supplied with stainless steel screws Set of 4 304 L

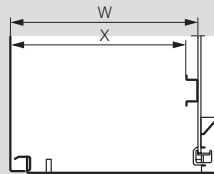
## Usable dimensions

### Doors



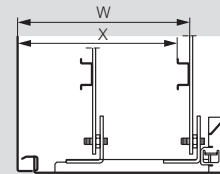
Cat.Nos	Cabinets			Door usable dimensions		Lock position
	Height A (mm)	Width B (mm)	Depth (mm)	O (mm)	P (mm)	Q (mm)
0 352 00	301.6	199.6	161.5	250	150	-
0 352 01/21	401.6	299.6	201.5	350	250	-
0 352 02/22	501.6	399.6	201.5	450	350	250
0 352 03/24	601.6	399.6	201.5	550	350	380
0 352 04	301.6	399.6	201.5	250	350	-
0 352 05/25	601.6	399.6	251.5	550	350	380
0 352 06/26	702.4	500	251.5	650	450	400
0 352 07	399.6	399.6	201.5	350	350	200
0 352 08	401.6	600	251.5	350	550	200
0 352 09	601.6	600	251.5	550	550	300
0 352 11/31	802.4	600	301.5	750	550	400
0 352 12	802.4	800.6	301.5	750	750	400
0 352 13/33	1003.6	800.6	301.5	950	750	600
0 352 14/76	1203.6	800.6	301.5	1150	750	700
0 352 15	1400.6	800.6	401.5	1350	750	700

## Usable depth



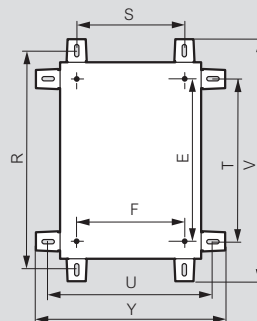
Cabinets	Back of cabinet	
Depth (mm)	W	X
160	140	125
200	180	165
250	230	215
300	280	265
400	380	365

## Adjustment of equipment (optional)

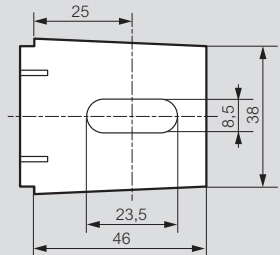


Cabinets	Depth (mm)	Cat.Nos for slide rails	With slide rails			
			W min	W max	X min	X max
250	0 367 43	93	213	78	198	
300	0 367 44	93	263	78	248	
400	0 367 45	93	363	78	348	

## Fixing



Cat.Nos 0 364 06/16



Cat.Nos	Vertical position		Horizontal position		V	Y	E	F
	R	S	T	U				
0 352 00	350	150	250	250	392	292	225	169
0 352 01/21	450	250	350	350	492	392	325	269
0 352 02/22	550	350	450	450	592	492	425	369
0 352 03/24	650	350	550	450	692	492	525	369
0 352 04	350	350	250	450	392	492	225	369
0 352 05/25	650	350	550	450	692	492	525	369
0 352 06/26	750	450	650	550	792	592	625	469
0 352 07	450	350	350	450	492	492	325	369
0 352 08	450	550	350	650	492	692	325	569
0 352 09	650	550	550	650	692	692	525	569
0 352 11/31	850	550	750	650	892	692	725	569
0 352 12	850	750	750	850	892	892	725	769
0 352 13/33	1050	750	950	850	1092	892	925	769
0 352 14/76	1250	750	1150	850	1292	892	1125	769
0 352 15	1450	750	1350	850	1492	892	1325	769