

Add-on modules DX³

for 1.5 module/pole DX³ MCBs



Technical characteristics **see e-catalogue**

Conform to IEC 61009-1, IEC 62423 (F type)
Voltage independent tripping except Cat.Nos 4 106 57/58/59
• AC type : detect AC components faults
• F type (High immunity) : detect faults with AC and DC components, increased immunity to false tripping
Detection of high frequency fault currents
For mounting on the right-hand side of 1.5 module per pole DX³ MCBs

Pack	Cat.Nos	2-pole - 230 V \sim		
		F type (old Hpi type)		
		Sensitivity (mA)	Nominal rating In (A)	Number of modules
1	4 105 76	30	63	2
1	4 105 77	30	125	4
		F type (old Hpi type) adjustable		
1	4 105 83	from 300 to 1000	63	4
1	4 105 84	from 300 to 1000	125	4

Pack	Cat.Nos	3-pole - 400 V \sim		
		F type (old Hpi type)		
		Sensitivity (mA)	Nominal rating In (A)	Number of modules
1	4 106 05	30	63	3
1	4 106 06	30	125	3
1	4 106 08	300	63	3
		F type (old Hpi type) adjustable		
1	4 106 11	from 300 to 1000	63	6
1	4 106 12	from 300 to 1000	125	6

Pack	Cat.Nos	4-pole - 400 V \sim		
		AC Type		
		Sensitivity (mA)	Nominal rating In (A)	Number of modules
1	4 106 24	30	125	6
1	4 106 28	300	125	6
		F type (old Hpi type)		
1	4 106 36	30	63	3
1	4 106 37	30	125	6
1	4 106 40	300	63	3
		F type (old Hpi type) adjustable		
1	4 106 43	from 300 to 1000	63	6
1	4 106 44	from 300 to 1000	125	6

Pack	Cat.Nos	4-pole 400 V \sim - Metering		
		LCD display For displaying active energy, instantaneous power and current per phase (A) consumption		
		F type (old Hpi type) with integrated energy meter		
		Sensitivity (mA)	Nominal rating (A)	Number of modules
1	4 106 57	30 à 3000	63	7.5
1	4 106 58	30 à 3000	125	7.5

Pack	Cat.Nos	4-pole 400 V \sim - Measurement		
		LCD display For displaying current per phase, voltage, frequency, active and reactive power, power factor, active and reactive energy consumption and harmonics		
		F type (old Hpi type) with integrated measurement unit		
		Sensitivity (mA)	Nominal rating (A)	Number of modules
1	4 106 59	30 à 3000	125	7.5

Add-on modules DX³

Compatibility MCBs/add-on modules

Breaking capacity	Curve	Number of poles	Add-on module for 1 module/pole MCBs	Add-on module for 1.5 module/pole MCBs
6000 / 10 kA	B, C, D	2P, 3P, 4P	All range	-
10000 / 16 kA	B, C, D	2P, 3P, 4P	In ≤ 63 A	In ≥ 80 A
25 kA	B, C, Z	3P, 4P	In ≤ 25 A	In ≥ 32 A
		2P	In ≤ 32 A	In ≥ 40 A
	D	3P, 4P	In ≤ 10 A	In ≥ 12,5 A
		2P	In ≤ 25 A	In ≥ 32 A
36kA, 50 kA	B, C, D	2P, 3P, 4P	-	All range

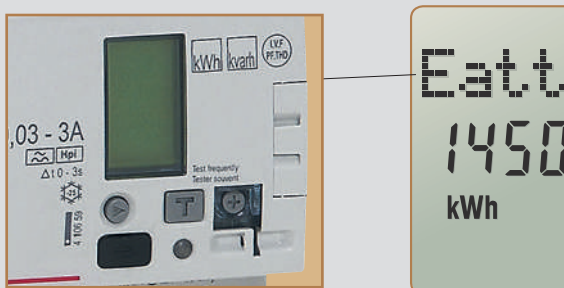
Adjustable add-on modules, F type

Easy to access settings on front panel with sealable transparent cover
Sensitivity: 300, 500 and 1000 mA
Time delay: instantaneous, selective (60 ms) or delayed (150 ms)



F type add-on modules with integrated metering unit or measurement control unit

Conform to standards EN 61009-1, IEC 62423 (F type), EN 60947-2 and 61557-12 (PMD/DD/K55)
Electronic settings on the front panel
Sensitivity: 30, 300, 1000, 3000 mA
Time delay: instantaneous, or delayed (300 ms, 1 s, 3 s)
For integration in the EMDX³ display and supervision system with interface Cat.No 4 210 75 (p. 105), to feed back information and the status of the remote MCB.
Precision: EN 61557-12 Class 1



For detailed dimensions, **see e-catalogue**

